

**The  
Sheffield  
College**

**GO  
HIGHER**

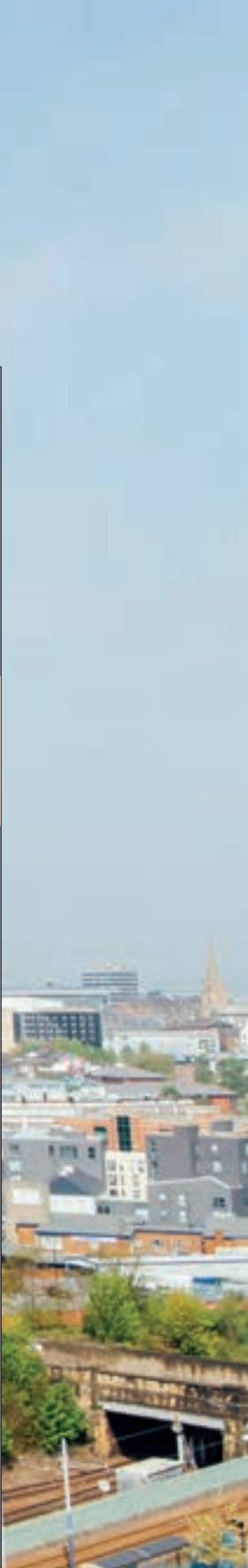
**2020-2021**

A Guide to University Level  
and Professional Courses

**“STUDYING  
AT THE  
SHEFFIELD  
COLLEGE  
CHANGED  
MY LIFE.”**

Dr Shqiperim Reka, Lecturer in Event Management at Sheffield Hallam University and former Sheffield College student

**OPEN  
DAYS**



# “STUDYING AT THE SHEFF COLLEGE CAMPUS

## OPEN DAYS

Thursday

24<sup>TH</sup>

October 2019

Thursday

21<sup>ST</sup>

November 2019

Tuesday

28<sup>TH</sup>

January 2020

Monday

9<sup>TH</sup>

March 2020

From 4pm–7pm

Please note university level information will be available at our Hillsborough and City Campuses only.

We want you to see for yourself!

We hold Open Days throughout the year where you'll have the opportunity to:

Meet the course tutors for an in-depth discussion about courses and entry requirements

Tour our fantastic facilities and see where you'll be learning

Find out more about how to travel to our campuses, including our excellent bus, tram and rail links

Speak to our careers team for impartial advice about the careers that you're interested in and what you need to do to get there

Take a look at some examples of the work you'll be doing on your course

See where you'll be spending your spare time on campus, including our HE common room, Lavazza coffee shops, refectories, Revive Beauty Salon and The Silver Plate Restaurant

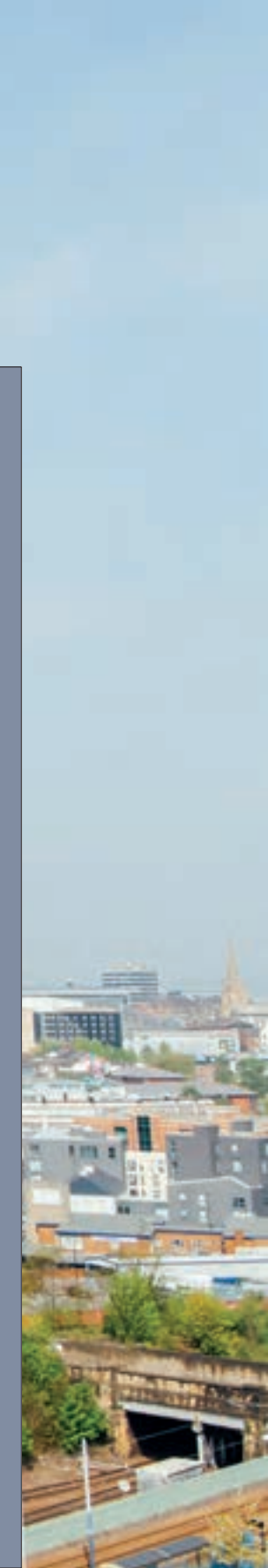
Get the chance to look at our sports team and enrichment offers

Speak to our Student Support Team about your financial, personal and in-class support options

We look forward to meeting you.

Head to: [www.sheffcol.ac.uk/open-days](http://www.sheffcol.ac.uk/open-days) to book your place today.

Dr Shqipen  
Hallam Uni



“STUDYING  
AT THE

AT THE  
S  
C  
C  
M

“I FELT VERY  
AT EASE.  
IT HAS MADE  
MY CHOICE  
VERY EASY!”

Open Day feedback, 2019

Dr Shqip  
Hallam Uni



# WELCOME

## Nowadays, there is a choice of study routes to help you achieve career success.

The Sheffield College offers an exciting range of university level courses and we are proud of our reputation in this area.

Around 500 students complete full-time and part-time university level and professional courses with us every year which are recognised by universities, employers and professional bodies.

The qualifications include full Honours Degrees, Foundation Degrees, Higher National Diplomas and Certificates.

They enable our students to develop industry relevant knowledge and skills to move into a new career, or progress in an existing one.

There are also exciting opportunities to complete a Higher Apprenticeship if you want to earn as you learn by training with an employer in the workplace whilst studying at college.

Not all students, therefore, have to go on to university to benefit from a high quality higher education experience.

What's more, if you study a university level qualification at the college you also benefit from lower tuition fees, smaller class sizes and expert support.

Our university level qualifications are also designed to meet the needs of employers and can be completed full-time or part-time to fit in with family and work commitments.

We provide a friendly and supportive atmosphere with some great facilities, including two children's nurseries.

So why not get in touch to find out about course places and how we can support your career ambitions.



**Angela Foulkes**  
Chief Executive and Principal

# CONTENTS

.....	
Why study with us?	4-5
.....	
The university experience	6-11
.....	
Facilities	12-13
.....	
Teaching	14-15
.....	
Support and financing your studies	16-17
.....	
Making you employable	18-19
.....	
Our courses explained	20-23
.....	
Our partners and awarding bodies	24-25
.....	
Courses	28-85
.....	
How to apply	86-89
.....	





# WHY STUDY WITH US?

There's a pretty big misconception about getting a university level qualification; you have to go to university to get one. Quite simply, that's not true.



At The Sheffield College we offer you the opportunity to study university level courses in a wide range of subjects, with more and more students choosing to do so each year. All of our courses are validated by leading universities, including Sheffield Hallam University and The Open University.

Here are just a few reasons why you should study with us:

Fantastic support networks, including in-class, personal and financial

Small group sizes and progression support

Tutors who are industry experts

Career driven courses

Top-class facilities

The university experience

Lower tuition fees, less debt

Stay local

Graduation

Pop along to one of our Open Days (details in the booklet inside the front cover) to have a look for yourself or contact [admissions@sheffcol.ac.uk](mailto:admissions@sheffcol.ac.uk) to find out more.

# THE UNIVERSITY EXPERIENCE

We know that your time with us isn't just about getting a university level qualification. The university lifestyle is hugely important. You want more, expect more and we're here to give you more. It's all about opportunities.



---

## Accommodation

Want the student halls lifestyle? As The Sheffield College is an associate college of Sheffield Hallam University, you will be eligible to apply to move in to their student accommodation and experience living with other students.

There is also a range of private student accommodation across Sheffield which you will be able to access.

Go to [www.sheffcol.ac.uk/student-support/he-accommodation](http://www.sheffcol.ac.uk/student-support/he-accommodation) for more information on how to apply for halls.



---

## Students' Union and Student Voice

Have your say on all pressing matters across the college by joining our Students' Union and Student Voice.

Our Student Voice is comprised of course reps from each course; all of whom are invited to training, monthly campus meetings, termly university level student forums and programme committees.

We very much see our students as contributors who drive key programme changes and college improvements.

## Graduation

Each year, we go all out to celebrate the graduation of our university level students with a ceremony at Sheffield Cathedral.

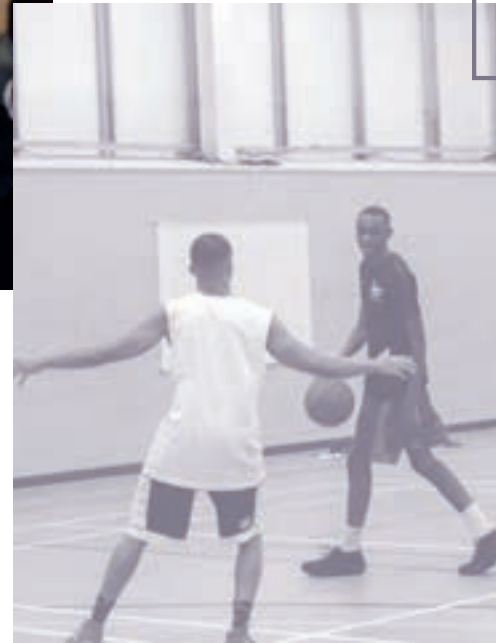
Our graduations are an amazing occasion with special guests, alumni speakers, and cap and gowns which represent the colour of the institution that validates your degree. They're a fantastic opportunity to celebrate your hard work and achievements with your loved ones.



## Your own space

At our Hillsborough Campus, we have recently invested in a common room for our university level students. The common room includes a small kitchenette, spaces for group work and table football, and gives you the chance to have your own space!

The idea of a common room was first raised at a Student Voice meeting which just goes to show that we are listening to our students and are committed to improving your experience!



## Join a club or society

We have a number of clubs and societies across the college, including our ever-growing LGBT+ Society, Film Club, Debate and Politics, and a Games Club. We will also help you set up your own if it doesn't exist yet!

## Fitness facilities

Keep yourself fit and healthy with free access to our gym facilities, or hire out our sports halls and all-weather 3G pitches.

## BUCS

In 2019, for the first time, our students entered the British Universities and Colleges Sport competitions. If you perform at a high level, our membership allows you to compete against university students from across the country.



### Trips and visits

Everyone loves a good trip, don't they? We put on visits to workplaces, locations around the country and even further afield to broaden your knowledge of different cultures and influences to enhance your learning.

In the last couple of years we've organised trips to New York, Florence, Berlin, Amsterdam, Beijing, London and lovely old Whitby.

Please note: some trips may incur extra costs.



### Discounts

Being a university level student at The Sheffield College entitles you to exactly the same discounts and benefits that all university students receive, including:

.....  
Council tax discounts

.....  
Free prescriptions

.....  
Student bank accounts and 0% interest overdrafts

.....  
Shopping discounts, including ASOS, Amazon, Spotify and more

.....  
Access to NUS Totem Card

.....  
Free Microsoft Office packages

# FACILITIES

We feel proud to say that our facilities rival not only the local colleges, but also some of the top universities in the country.

We've invested over £14 million in our campuses over the past few years to ensure that we're offering our students the very best experience possible.

We have worked closely with local employers so that our facilities replicate the ones you'll be working in one day.

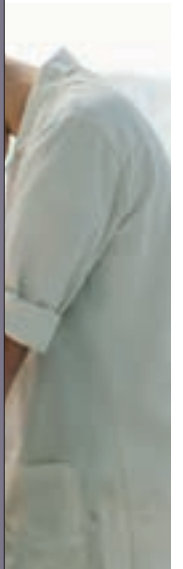
You'll complete your qualification using the best equipment, in the best surroundings, and leave us full of confidence and experience.

Our four main campuses are based across the city: City, Hillsborough, Peaks and Olive Grove. As a university level or professional student you'll be studying at our City, Hillsborough or Olive Grove Campuses, or with your employer.

Although it is unlikely you will have any courses at our Peaks Campus, you will still have access to the Learning Resource Centre there.



# CAMPUSES ACROSS THE CITY



# FACILITIES

We feel proud to say that our facilities rival not some of

We've invested campuses over ensure that we the very best e

We have worke employers so t the ones you'll

You'll complete using the best surroundings, confidence and

Our four main across the city: and Olive Grov professional st at our City, Hill Campuses, or

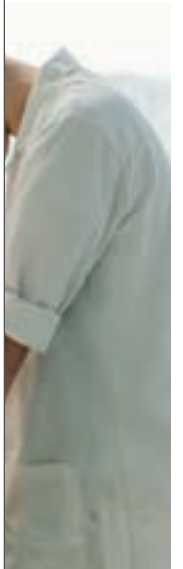
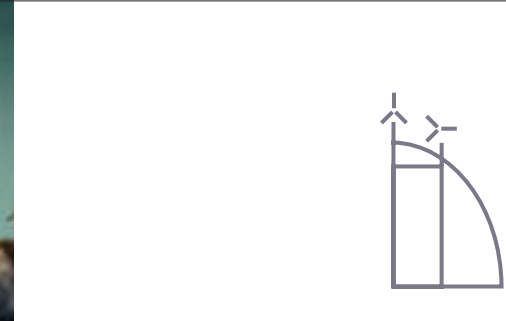
Although it is u courses at our still have acces Centre there.

## CITY

Granville Road, S2 2RL

**The Sheffield College City Campus is a great place to be; perfectly located just a 10 minute walk from the city centre and only 5 minutes from the train station.**

For students requiring childcare, there is an on-site nursery. Please email [info@sheffcol.ac.uk](mailto:info@sheffcol.ac.uk) for more information.



- |                          |                             |
|--------------------------|-----------------------------|
| .....                    | .....                       |
| Bakery                   | Learning Resource Centre    |
| .....                    | .....                       |
| Children's nursery       | Networking lab              |
| .....                    | .....                       |
| Construction workshops   | Revive Beauty Salon         |
| .....                    | .....                       |
| Dental labs              | Science labs                |
| .....                    | .....                       |
| Digital classrooms       | Sports hall                 |
| .....                    | .....                       |
| Early years sensory room | The Silver Plate Restaurant |
| .....                    | .....                       |
| Hospital ward            | Training kitchens           |
| .....                    | .....                       |



# FACILITIES

We feel proud to say that our facilities rival not some of

We've invested campuses over ensure that we the very best e

We have worke employers so t the ones you'll

You'll complete using the best surroundings, confidence and

Our four main across the city; and Olive Grov professional st at our City, Hill Campuses, or y

Although it is u courses at our still have acces Centre there.

# HILLSBOROUGH

Livesey Street, S6 2ET

Our Hillsborough Campus, in the north of the city, is where the majority of our university level courses are based; with art and design, photography, media production, music, business, health and social care, sport, public services and more all taught here.

Childcare is also available on-site. Please email [info@sheffcol.ac.uk](mailto:info@sheffcol.ac.uk) for more information.



- .....
- 3D, fine art and print workshops
- .....
- 3G sports pitches
- .....
- Automated glasshouses
- .....
- Fitness suites
- .....
- Floristry studios
- .....
- Mac suites
- .....
- Media make-up studio
- .....
- Music rehearsal and recording
- .....
- .....
- Photography studio
- .....
- Science labs
- .....
- Sports hall
- .....
- Sprung floor dance studios
- .....
- Stage production and prop-making workshop
- .....
- Theatre
- .....
- TV studio and control room
- .....
- Veterinary suites
- .....



# FACILITIES

We feel proud to say that our facilities rival not some of

We've invested campuses over ensure that we the very best e

We have worke employers so t the ones you'll

You'll complete using the best surroundings, confidence and

Our four main across the city: and Olive Grov professional st at our City, Hill Campuses, or

Although it is u courses at our still have acces Centre there.

## OLIVE GROVE

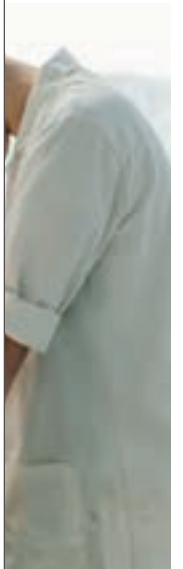
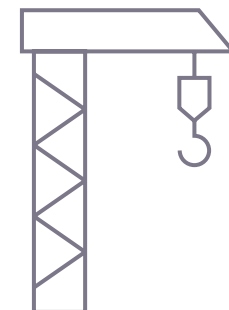
Olive Grove Road, S2 3GE

Olive Grove has recently undergone major investment to provide students with new industry-standard workshops, a Learning Resource Centre, new classrooms and a canteen. Olive Grove is the place to study all things engineering; from electrical and electronic, to mechanical and manufacturing – with all the latest machinery and CAD software on-site.

Olive Grove is located just a 5 minute walk from our City Campus.



- ..... 3D printer
- ..... CAD machinery
- ..... Electrical engineering
- ..... Electrical installation
- ..... Manufacturing engineering
- ..... Motor vehicle workshops
- ..... Plumbing and gas fitting
- .....



# FACILITIES

We feel proud to say that our facilities rival not only some of the best in the country but also those of some of the world's leading universities.

We've invested in our campuses over the last few years to ensure that we offer the very best environment for our students.

We have worked with leading employers so that we can offer the ones you'll want to work for.

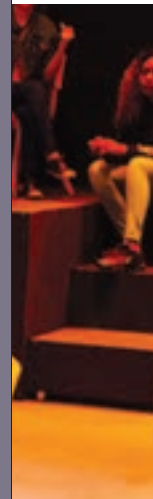
You'll complete your courses using the best facilities, surroundings, and confidence and competence.

Our four main campuses are across the city: the City, Hill, Olive Grove, and professional studios at our City, Hill, and Olive Grove Campuses, or you can study at our City Campus.

Although it is unusual to offer university level courses at our City Campus, you will still have access to the Learning Resource Centre there.

Whilst we don't offer any university level courses at Peaks, you will still have access to the Learning Resource Centre.

**Peaks Campus**  
**Waterthorpe Greenway**  
**S20 8LY**



# TEACHING

**Insight, knowledge, passion and commitment. Real industry experts.**

Our tutors are all about you. It's their job to support you through your qualification and prepare you for progression to further study or employment.

Working in smaller class sizes than at university, you will have more opportunities for in-class support, one-to-ones with tutors and a personalised approach to learning from people who know your ambitions closely.

You'll be taught through a variety of methods, including lectures, seminars, tutorials and independent study. How you will be taught will depend on the course and modules you are studying to help you get the most out of your time with us. You might also conduct fieldwork, small-group work and take part in group projects.

We also have a team of people to provide you with academic study support. They will help you develop key academic skills (such as referencing, research and planning) to help you thrive in your studies.

As our courses are strongly aligned to the demands of employers, we work hard to find you relevant work placements, and opportunities to work on live and simulated projects with some of our employers.

Many of our excellent teaching staff have worked, or are still working, in the industry that you are trying to break into. That means they can share valuable knowledge and experiences with you, including what to expect when you graduate, what problems you might experience and how to overcome them.

This experience, insight and knowledge is invaluable to your progression and their passion for the industry gives you a fantastic advantage when it comes to applying for a job.

**"The tutors and support staff gave me the knowledge of film and confidence to embrace my artistic nature which enabled me to go ahead and create my career path."**

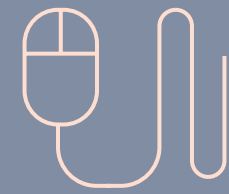
**Samuel Summers**

Former Creative Practice student

**"THE TUTORS ORGANISE AN END OF YEAR EXHIBITION WHERE LOCAL EMPLOYERS COME TO LOOK AT YOUR WORK. I WAS FORTUNATE ENOUGH TO BE HEADHUNTED BY A NUMBER OF LOCAL DESIGN AGENCIES AS A RESULT."**

Tom Smedley, Creative Developer and former Foundation Degree in Graphic Design student





# SUPPORT AND FINANCING YOUR STUDIES





# STUDENT SUPPORT

Studying for a university level or professional course can, at times, be tough. At The Sheffield College we have a dedicated Student Support Team on hand to make your time with us as easy, stress-free and enjoyable as possible.

Our Student Support Team are committed to doing everything they can to help ease your problems, stresses and concerns, and are on hand with advice and guidance on a number of issues, including:

..... accommodation during your study .....	..... travel to and from The Sheffield College .....
..... personal issues .....	..... childcare .....
..... disabled access and support .....	..... tuition fees and personal finances .....

Our Learning Resource Centres are open for loaning an ever-growing collection of books, DVDs, journals, audio, visual and electronic resources (including laptops) to support you with your study. You can also borrow specialist equipment from your department.



# FINANCIAL HARDSHIP FUND

Should you find yourself struggling for money during your university level course, you may be entitled to support from our Financial Hardship Fund. You can use the fund to ease any financial concerns allowing you to concentrate on your course.

Please don't think that anything is too little or too much, each application we receive will be assessed on an individual basis. During the assessment process we will require a copy of your Student Finance England entitlement, and other supporting evidence such as bank statements or details of your rent.

You are not able to use this fund to cover tuition fees but you may be eligible if you are:

.....  
a student with children,  
especially single parents  
.....

.....  
a mature student with existing  
financial commitments  
.....  
from a low-income family  
.....

.....  
living with a disability  
.....

.....  
a student that was previously  
in care (a 'care leaver')  
.....

.....  
homeless or living in a foyer  
.....

If your application is unsuccessful, we will endeavour to point you in the direction of alternative support.

Please speak to our Student Support Team to find out more information or to submit an application.





# DISABLED STUDENTS' ALLOWANCES

If you have a disability that affects your ability to study, you could be eligible for Disabled Students' Allowances (DSAs) to help overcome cost barriers to your education.

These disabilities could be things like a:

.....  
learning difficulty (for example  
dyslexia, dyspraxia or ADHD)  
.....  
mental health condition (like  
anxiety or depression)  
.....

.....  
physical disability  
.....  
long-term health condition  
.....

DSAs are awarded subject to eligibility and in addition to other student finance. You do not have to repay DSAs and how much you receive depends on your individual (not household) needs.

You will be able to use DSAs to help cover costs such as:

.....  
specialist equipment, for  
example an adapted computer  
or specialist software  
.....  
non-medical helpers  
.....

.....  
extra travel  
.....  
other disability-related costs  
of studying  
.....

If you think you are eligible, it's recommended that you submit an application as soon as possible to ensure financial support is in place.

For more information and to access to the above support, please visit [www.sheffcol.ac.uk/student-support/disabled-students-allowance](http://www.sheffcol.ac.uk/student-support/disabled-students-allowance) or email [admissions@sheffcol.ac.uk](mailto:admissions@sheffcol.ac.uk)

## FINANCING YOUR COURSE

Our tuition fees are less than traditional universities but that doesn't mean that you're not entitled to financial support. Support can be easily accessed from The Student Loans Company for any of our university level courses.



Support can be accessed for tuition fees and personal maintenance. If you apply for tuition fee support, The Student Loans Company will pay your course tuition fees directly to us removing the hassle of you having to deal with any payments.

Year	2020/21
Course type	Full-time
Cost	£6,500 (per year)
Notes	Please note part-time study fees are calculated individually. Please get in touch for more information.

You can also apply for a maintenance loan to help cover your living costs whilst studying, whether you stay at home or move out. How much you receive will be dependent on your household income/income of your parents.

You may also be eligible to apply for a support grant. Please see the Student Finance website for more details.

Take a look at the next page for repayment information.

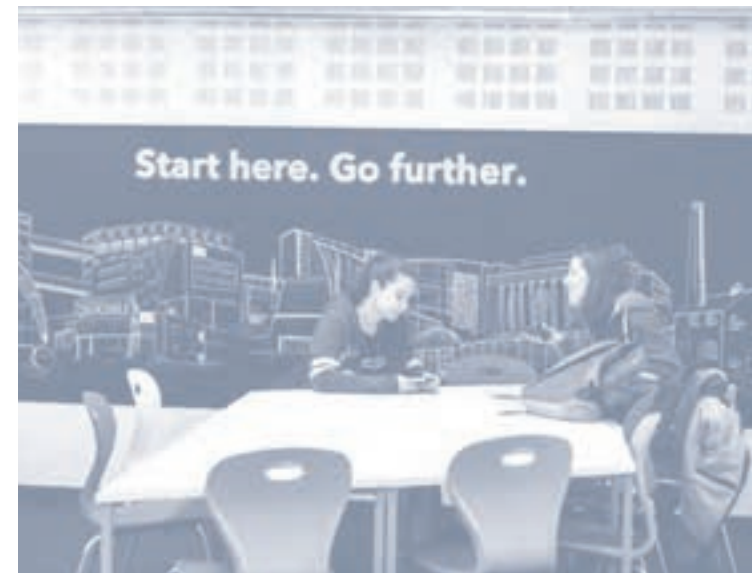
Part-time courses differ slightly but for more information about all things Student Finance, eligibility and how much you may be entitled to, please visit [www.gov.uk/student-finance](http://www.gov.uk/student-finance) or contact us [info@sheffcol.ac.uk](mailto:info@sheffcol.ac.uk)



## PAYING IT BACK

Paying back your tuition fees and loan might sound a bit scary, but it really isn't.

Repayments work like this; you only start paying your loan back when you earn more than £25,000 a year – and that's not until the April after you finish. Once you go over the threshold, you will pay back 9% of your income over £25,000 – not 9% of your total income.



The repayments will automatically be deducted from your wages before you'll have chance to notice, or spend it!

Oh and one last thing; if you have previously taken out a 19+ Advanced Learner Loan for a recognised Access to HE course, the balance will be written off upon completion of a full degree!

If you want to discuss your financial options with us further, please give us a call on **0114 260 2600** for more information. You can also go to [www.gov.uk/student-finance](http://www.gov.uk/student-finance) for independent financial advice.

For more information about support at The Sheffield College, please visit [www.sheffcol.ac.uk/student-support](http://www.sheffcol.ac.uk/student-support)

You can find out more about the loans and financial options available to you by visiting the Student Finance website at [www.gov.uk/student-finance](http://www.gov.uk/student-finance)

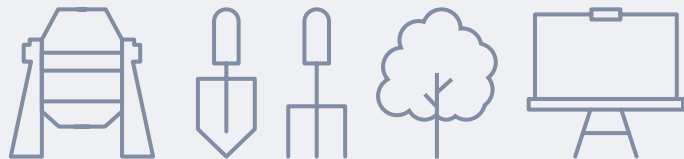


# MAKING YOU EMPLOYABLE

All of our courses focus on giving you the industry knowledge, skills and experience to give you that little bit extra when it comes to applying for a job.

We have specifically designed our courses to be career driven which will give you the skills and experiences to make you an employable candidate within your industry after graduating. Working closely with our employer partners and beyond, you will have a number of opportunities to enhance your CV through:

- .....
- ..... real work placements relevant to your industry
- .....
- ..... live projects set by employers
- .....
- ..... mentoring
- .....
- ..... masterclasses from professionals
- .....
- ..... visits to the workplace
- .....
- ..... exhibiting work or delivering presentations
- .....



To give you an idea of what that might mean for you, here are a few examples of what we've been up to over the last year:

- Theatre performances at Kelham Island Museum
- Masterclasses from industry-leads at Nestlé and celebrity make-up artist Karla Powell
- End of Year Creative and Design Exhibition at Sheffield's Workstation and Media Make-up Exhibition at Sheffield's Winter Gardens, both attended by local employers
- Business students attended Sheffield Chamber of Commerce Showcase Sheffield event on a networking trip
- Working on live briefs with local employers, including graphic design briefs and our floristry students helping to dress our student awards
- HND Animal Management applied their skills in working environments at Chester Zoo, and surveying trips to the Moors and Norfolk
- Sport students transitioning to their top-up degree programme at Sheffield Hallam University



# OUR COURSES EXPLAINED

There are a few different ways to study for a university level qualification. Anything Level 4 and above is higher education; with a Level 6 qualification being a full Bachelor's (Honours) Degree or top level professional qualification.



To avoid complication, here are the various levels broken down for you:

## Higher National Certificate (HNC)

A HNC is a Level 4 vocational qualification which gives you the skills and knowledge for a particular job. They are highly valued by employers, work-specific, and are recognised when applying for membership of professional and industry organisations. It typically takes one year to complete when studied full-time (or 18 months part-time).

## Higher National Diploma (HND)

Like the HNC, the HND is a vocational qualification but at Level 5. A HND can typically be studied full-time over two years or part-time over three years. If you have a relevant HNC qualification, your HND will only take one year to complete (full-time). This qualification can often be used to gain entry to university for a related course.

## Foundation Degree

A Foundation Degree equips you with up-to-date workplace knowledge, skills and experiences to further your chosen career. Lasting two years, it's roughly equivalent to your first two years at university and is a Level 5 qualification.

## Top-up Degrees

Upon completion of your HND or Foundation Degree you can, as the name suggests, top-up your existing qualification to Bachelor's Level 6 (full Bachelor's Degree). This is essentially the final year of university. Please check your course can progress onto a top-up prior to starting.

## Bachelor's (Honours) Degrees

A Bachelor's (Honours) Degree is a three or four year course studied at undergraduate level and is a Level 6 qualification.

## Postgraduate Certificate in Education (PGCE)

If you'd like to pursue a career in teaching you can study a Level 7 PGCE or Certificate in Education.

## Higher Apprenticeships

A Higher Apprenticeship is a nationally accredited work-based programme designed to meet employers' needs at higher skill levels, and includes qualifications at Level 4 and 5. You will gain a recognised professional qualification (equivalent to the first year at university), technical knowledge and professional skills, as well as wider business competencies and that all important work experience.

## Degree Apprenticeships

A Degree Apprenticeship is the next level up from a Higher Apprenticeship but allows you to gain a full Bachelor's (Level 6) qualification. Our Apprenticeships are designed in partnership with employers and provide invaluable work experience, as well as study.

## Professional courses

These courses range from Level 3 to 6 and help you to boost your CV, progress in the workplace and can often provide you with professional body recognition in your area.

Professional courses are also ideal for people looking to retrain.

**Want to study a university level course but haven't got the qualifications to get started?**

In just one year, our access to university level courses will help you gain the UCAS points you need to progress on to study your degree. Contact [info@sheffcol.ac.uk](mailto:info@sheffcol.ac.uk) to find out more.

Level	Course type	Typical entry requirements	Progression
4	HNC	BTEC National Certificate, Level 3 Diploma or equivalent (inc. A Levels) in a relevant subject. Experience gained at work may qualify	HND Employment
5	HND	HNC	Employment Top-up Degree
	Foundation Degree	Between 48-64 UCAS points Level 3 Diplomas and work experience considered on an individual basis for mature entrants or those not coming straight from school/college	Employment Top-up Degree
6	Bachelor's Degree	Please see individual course requirements	Employment Postgraduate Certificate
	Top-up	Applicants must have successfully completed a Foundation Degree or HND, and provide a supportive reference	Employment Postgraduate Certificate
7	Postgraduate Certificate in Education (PGCE)	Relevant Bachelor's (Honours) Degree	Career in teaching

Please refer to our website for the most up-to-date and specific entry requirements. Apprenticeship requirements are likely to vary for each vacancy. This is just a guide.

**All of our courses require a minimum GCSE grade C/4 in English Language and Maths.**

# OUR PARTNERS AND AWARDING BODIES

**We work with carefully chosen, prestigious university partners and awarding bodies to develop, approve and provide certification for our courses.**

These partners have approved the quality of our provision and facilities, together with the student experience we provide. We work together with our partners to continuously enhance our courses and your experience. We currently work with:

.....  
The Open University



.....  
Sheffield Hallam University



.....  
University College Birmingham



.....  
Pearson



When you successfully complete your course you will receive your certificate from the partner who validates your award. The name of the partner for your course can be found under course information.

The Sheffield College is approved by The Open University as an appropriate organisation to offer higher education programmes leading to Open University validated awards.





**“GOING TO COLLEGE HAS CHANGED MY LIFE, AND HELPED ME GROW AND DEVELOP. I NOW HAVE CONFIDENCE IN A BIG GROUP OF FRIENDS FROM ALL WALKS OF LIFE.”**

**Regan O’Connell**, Foundation Degree in Sport and Exercise Coaching student

**“THE TUTORS WERE REALLY SUPPORTIVE. THEY HELPED ME FIND A JOB AFTER I GRADUATED SO I WENT STRAIGHT INTO EMPLOYMENT. I WOULD RECOMMEND THE SHEFFIELD COLLEGE TO ANYONE THINKING OF STARTING A CAREER IN CATERING. THE COURSE IS TOP QUALITY!”**

**Anna Sterling**, Owner of Cocoa Mester – and former Foundation Degree in Bakery and Patisserie Technology student



# COURSES

Animal Care	30-31
Business and Professional Services	32-35
Catering and Hospitality	36-37
Civil Engineering	38-39
Computing	40-41
Construction	42-43
Dental	44-45
Design and Visual Arts	46-49
Education	50-51
Engineering	52-57
Floristry	58-59
Health and Social Care	60-61
Media Make-up	62-63
Media, Journalism and Photography	66-69
Music and Performing Arts	70-75
Sport	76-79
Uniformed Public Services	80-81
Higher and Degree Apprenticeships	82-83
Professional Courses	84-85

# ANIMAL CARE

## → HND Animal Management

This course provides opportunities for students to concentrate on the development of higher-level skills in a land-based context and learn how their role, and that of their business, fits within the overall structure of the land-based industries, the national and international economy, and the global overview.

This qualification equips individuals with the knowledge, understanding and skills for successful employment or progression to further study. The course also provides opportunities for specialist study relevant to individual vocations and contexts.

**Modules include:** Business Environment, Animal Husbandry, Animal Health and Welfare, and Animal Nutrition. There are also a number of specialist modules available.

**Course type:** Full-time **Validated by:** Pearson  
**Campus:** Hillsborough  
**UCAS code:** DN32

Please refer to the website for full course details, entry requirements and the most up-to-date information [www.sheffcol.ac.uk/courses](http://www.sheffcol.ac.uk/courses)

Level	Course	Career routes	Potential salary
5	- HND Animal Management	<ul style="list-style-type: none"> <li>- Pet Behaviour Counsellor</li> <li>- RSPCA Inspector</li> <li>- Veterinary Nurse</li> <li>- Zookeeper</li> </ul>	<ul style="list-style-type: none"> <li>£50,000</li> <li>£30,000</li> <li>£26,000</li> <li>£25,000</li> </ul>



Animal Care



# BUSINESS AND PROFESSIONAL SERVICES

## → FdA Business Leadership and Management

Providing the knowledge and understanding of how businesses are set up, operate and are managed, this course will develop confident leaders with effective interpersonal, communication and problem-solving skills.

Successful completion of the course will provide students with the knowledge to pursue careers in business, set up a business or continue to top-up to a full Honours Degree.

**Modules include:** Economics for Business, Personal and Professional Development, Managing People, Financial Decision Making, Marketing a Product, Business Law, Business Strategy, Leading and Managing Change, Managing eBusiness, Leading and Managing a Project, Global Perspectives, Ethics and Research.

**Course type:** Full-time **Validated by:** Sheffield Hallam University  
**Campus:** Hillsborough  
**UCAS code:** N200

Please refer to the website for full course details, entry requirements and the most up-to-date information [www.sheffcol.ac.uk/courses](http://www.sheffcol.ac.uk/courses)

## → BA (Top-up) Management (Business)

This exciting one year top-up course aims to develop specialist knowledge and a broad understanding of the global, national, regional and local business environment.

Graduates will develop skills to enable them to work within the global management environment. Students will study modules with students on the Top-up Management (Events) and Top-up Management (Sport) courses, as well as following a specialist business management pathway.

**Modules include:** Organisational Psychology, Strategic International Management, International Marketing, Minor Research Project, Major Project.

**Course type:** Full-time **Validated by:** The Open University  
**Campus:** Hillsborough  
**UCAS code:** N1R3

Please refer to the website for full course details, entry requirements and the most up-to-date information [www.sheffcol.ac.uk/courses](http://www.sheffcol.ac.uk/courses)

Level	Course	Career routes	Potential salary
6	- BA (Top-up) Management (Business)	- Business Project Manager	£70,000
	- BA (Top-up) Management (Events)	- Business Development Manager	£60,000
	- BA (Top-up) Management (Sport)	- Charity Fundraiser	£60,000
5	- FdA Business Leadership and Management	- Marketing Executive	£35,000
		- Human Resources Manager	£150,000
		- Event Manager	£80,000





## → BA (Top-up) Management (Events)

This exciting, one year top-up course aims to develop specialist knowledge and a broad understanding of the global, national, regional and local events business environment.

Graduates will develop skills to enable them to work within the global management environment. Students will study modules with students on the Top-up Management (Business) and Top-up Management (Sport) courses, as well as following a specialist events management pathway.

**Modules include:** Creativity and Enterprise in Events, Strategic International Management, International Marketing, Minor Research Project, Major Project.

**Course type:** Full-time **Validated by:** The Open University

**Campus:** Hillsborough

**UCAS code:** N821

Please refer to the website for full course details, entry requirements and the most up-to-date information [www.sheffcol.ac.uk/courses](http://www.sheffcol.ac.uk/courses)

## → BA (Top-up) Management (Sport)

This exciting one year top-up course aims to develop specialist knowledge and a broad understanding of the global, national, regional and local sport business environment.

Graduates will develop skills to enable them to work within the global management environment. Students will study modules with students on the Top-up Management (Events) and Top-up Management (Business) courses, as well as following a specialist sports management pathway.

**Modules include:** Innovation for Sport, Strategic International Management, International Marketing, Minor Research Project, Major Project.

**Course type:** Full-time **Validated by:** The Open University

**Campus:** Hillsborough

**UCAS code:** N880

Please refer to the website for full course details, entry requirements and the most up-to-date information [www.sheffcol.ac.uk/courses](http://www.sheffcol.ac.uk/courses)



# CATERING AND HOSPITALITY

## → FdSc Bakery and Patisserie Technology

Developed in consultation with industry, this course develops the practical skills, technical ability and business knowledge needed for success in a creative, rewarding and challenging industry.

Whether you want to start your own business baking artisan breads, become a chocolatier or patissiere, or work in food technology or new product development, you will develop the high-level technical and operational skills required to succeed.

**Modules include:** Artisan Bread, Bakery and Confectionery Science, Food Safety and Hygiene, Specialist Confectionery, Introduction to Patisserie, Managing for a Profit, Advanced Confectionery and Chocolate, Contemporary Bread Production, Food Production Management, Quality Management Systems, Contemporary Patisserie, Enterprise Start-up Studies and New Product Development.

**Course type:** Full-time **Validated by:** University College Birmingham  
**Campus:** City  
**UCAS code:** D6M7

Please refer to the website for full course details, entry requirements and the most up-to-date information [www.sheffcol.ac.uk/courses](http://www.sheffcol.ac.uk/courses)

Level	Course	Career routes	Potential salary
5	- FdSc Bakery and Patisserie Technology	- Food Scientist - Cake Decorator - Baker	£45,000 £25,000 £40,000



Catering and Hospitality



# CIVIL ENGINEERING

## → HNC Construction and the Built Environment (Civil Engineering)

This two year, part-time, broad-based course develops knowledge and understanding of a wide range of subjects, learning and study skills appropriate to higher education.

Communication, study and analytical skills will be developed through a wide range of assignment tasks, practical sessions and project work. The course is recognised by several professional bodies, including The Chartered Institute of Highways and Transportation, and the Institute of Civil Engineers.

**Modules include:** Individual Project, Construction Technology, Science and Materials, Construction Practice and Management, Construction Information (Drawing, Detailing, Specification); Maths for Construction; Principles of Structural Design.

**Course type:** Part-time **Validated by:** Pearson

**Campus:** City

Please refer to the website for full course details, entry requirements, the most up-to-date information and to apply for part-time courses [www.sheffcol.ac.uk/courses](http://www.sheffcol.ac.uk/courses)



Civil Engineering

Level	Course	Career routes	Potential salary
4	- HNC Construction and the Built Environment (Civil Engineering)	- Structural Engineer - Land Surveyor - Civil Engineer	£50,000 £70,000 £80,000

# COMPUTING

## → HNC Computing

This HNC course has been developed in conjunction with employers in the Sheffield City Region and addresses the key skills required for a successful career in the computing industries.

The course covers a range of advanced level skills in high demand, both locally and internationally.

Students are offered a broad introduction to the subject area via a mandatory core of learning, while allowing for the acquisition of skills and experience through the selection of units across a range of occupational sectors.

The course will use up-to-date teaching resources from our status as a Cisco Academy, such as Packet Tracer, and will be based in a brand new networking lab using high-end client and server equipment. Engagement with local employers through trips and visits will also be incorporated into the course.

This course is equivalent to the first year of a degree and upon successful completion of the HNC in Computing, students can progress and top-up their qualification to a HND in Computing in the second year of the course.

**Modules include:** Programming, Networking, Professional Practice, Database Design and Development, Security, Managing a Successful Computing Project, Computer Systems Architecture and Maths for Computing.

**Course type:** Full-time **Validated by:** Pearson

**Campus:** City

**UCAS code:** 4R2Q

Please refer to the website for full course details, entry requirements and the most up-to-date information [www.sheffcol.ac.uk/courses](http://www.sheffcol.ac.uk/courses)

## → HND Computing

This HND course has been developed in conjunction with employers in the Sheffield City Region and addresses the key skills required for a successful career in the computing industries. The course is equivalent to the second year of a degree and top-up options are available for the full BSc (Hons) qualification.

The course covers a range of advanced level skills in high demand, both locally and internationally, and is designed to bridge the digital skills gaps with an industry-specialist taught advanced programme.

Learners will not only develop key skills across a range of subjects, but will develop independence and interdependence via combinations of individual and group projects.

The Sheffield College works in close partnership with several major local companies, through which guest speakers and study trips will be arranged throughout the year. There may also be an opportunity to compete in the WorldSkills competition with regional and national heats in a computing related field, leading to representing the UK at the world finals.

**Modules include:** Computing Research Project, Business Intelligence, Network Security, Forensics, Artificial Intelligence, Games Development, Virtual and Augmented Reality Development.

**Course type:** Full-time **Validated by:** Pearson

**Campus:** City

**UCAS code:** 5R2Q

Please refer to the website for full course details, entry requirements and the most up-to-date information [www.sheffcol.ac.uk/courses](http://www.sheffcol.ac.uk/courses)

Level	Course	Career routes	Potential salary
5	- HND Computing	- Software Developer	£70,000
		- IT Project Manager	£70,000
		- App Developer	£55,000
4	- HNC Computing	- Forensic Computer Analyst	£60,000

# CONSTRUCTION

## → HNC Construction and the Built Environment

This two year, part-time course will develop knowledge and understanding of a wide range of construction subjects.

Communication, study and analytical skills appropriate to higher education will be developed through learning and study skills. The qualification is recognised by several professional bodies, including The Chartered Institute of Building and The Royal Institute of Chartered Surveyors.

**Modules include:** Individual Project, Construction Technology, Science and Materials, Construction Practice and Management, Legal and Statutory Responsibilities in Construction, Construction Information (Drawing, Detailing, Specification); Surveying, Measuring and Setting Out.

**Course type:** Part-time **Validated by:** Pearson

**Campus:** City

Please refer to the website for full course details, entry requirements, the most up-to-date information and to apply for part-time courses [www.sheffcol.ac.uk/courses](http://www.sheffcol.ac.uk/courses)

Level	Course	Career routes	Potential salary
4	- HNC Construction and the Built Environment	<ul style="list-style-type: none"> <li>- Construction Site Manager</li> <li>- Building Surveyor</li> <li>- Facilities Manager</li> <li>- Environmental Consultant</li> <li>- Construction Contracts Manager</li> </ul>	<ul style="list-style-type: none"> <li>£70,000</li> <li>£70,000</li> <li>£60,000</li> <li>£60,000</li> <li>£57,000</li> </ul>





# DENTAL

## → FD Dental Technology

Offering a highly practical focus to dental technology, this course allows students to develop in-depth specialist skills whilst also gaining a broad, contextual understanding of the profession in which employers are demanding highly skilled graduates.

The course encourages the development of practical skills in specialist areas, including complete/partial removable prosthodontics, fixed restorative prosthodontics and orthodontics that meet the needs of the profession. Students who graduate will be safe beginners and able to continue to develop skills in the industry.

**Modules include:** Introduction to Dental Technology Techniques, Anatomy and Terminology, Legislation and Professionalism, Dental Public Health, Removable Prosthesis and Orthodontics, Introduction to Advanced Techniques, Dental Material Science, Work-based Project.

**Course type:** Full-time **Validated by:** The Open University  
**Campus:** City  
**UCAS code:** B840

Please refer to the website for full course details, entry requirements and the most up-to-date information [www.sheffcol.ac.uk/courses](http://www.sheffcol.ac.uk/courses)



Dental

Level	Course	Career routes	Potential salary
5	- FD Dental Technology	- Dental Technician	£43,772

# DESIGN AND VISUAL ARTS

## → FdA Creative Digital Practice; Games Development

This innovative course draws upon approaches which underpin professional practice and contemporary thinking.

Experienced staff and high quality industry support ensure the course prepares students for employment, postgraduate study and/or self-fulfilment. As well as designing/developing a proposal document for a working production, a self-initiated project builds on existing skills and knowledge to carry out specialist research for a negotiated brief.

**Modules include:** Games Studies, Ideation and Creative Problem Solving, 3D Games Engines, Games Design, Practical and Technical Skills for Industry, 3D Modelling and Texture Creation, Group Project: 3D Games World Production, 3D Animation, Professional Practice, Self-initiated Project in Games Development.

**Course type:** Full-time **Validated by:** Sheffield Hallam University  
**Campus:** Hillsborough  
**UCAS code:** I167

Please refer to the website for full course details, entry requirements and the most up-to-date information [www.sheffcol.ac.uk/courses](http://www.sheffcol.ac.uk/courses)



Level	Course	Career routes	Potential salary
6	- BA (Hons) Creative Practice (Top-up) Graphic Design	- Computer Games Developer	£70,000
		- Senior Graphic Designer	£50,000
5	- FdA Creative Digital Practice; Games Development	- Animator	£36,000
	- FdA Graphic Design	- Illustrator	£40,000
		- Photographer	£50,000
		- Web Designer	£40,000





## → FdA Graphic Design

This course has a strong vocational and industrial focus. Students graduate with high levels of creative and professional skills, and knowledge and expertise derived from a curriculum that places emphasis on work-based learning experiences/practice.

Students will be equipped with the knowledge, understanding and skills required for success in the sector, or the opportunity for progression to further study including to our BA (Hons) Creative Practice (Top-up) Graphic Design course.

**Modules include:** Introduction to Design, Visual Communications, Corporate Identity, Advertising and Promotion, Contextual Studies, Design in the Digital Environment, Graphics and Branding, Professional Design Project, Competition Projects, Preparation for Industry, Work-based Learning.

**Course type:** Full-time    **Validated by:** Sheffield Hallam University  
**Campus:** Hillsborough  
**UCAS code:** W210

Please refer to the website for full course details, entry requirements and the most up-to-date information [www.sheffcol.ac.uk/courses](http://www.sheffcol.ac.uk/courses)



## → BA (Hons) Creative Practice (Top-up) Graphic Design

This course is aimed at students who wish to top-up their Foundation Degree to a full Bachelor's (Honours) Degree.

Students will have the opportunity to undertake a practical, industry-based creative project which may involve work-based learning, exhibiting work, business start-ups, self-promotion or internships, as well as writing research proposals for specialist projects you plan to undertake. Students will work towards the completion of a personal major practical project and professionally present work at an end of year exhibition to industry-invited guests.

**Modules include:** Critical Studies, Creative Practice, Professional Development, Planning for the Major Project, Major Project.

**Course type:** Full-time    **Validated by:** Sheffield Hallam University  
**Campus:** Hillsborough  
**UCAS code:** W2A3

Please refer to the website for full course details, entry requirements and the most up-to-date information [www.sheffcol.ac.uk/courses](http://www.sheffcol.ac.uk/courses)



# EDUCATION

## → FdA Early Years Education

Designed to equip students with the skills to become a practitioner in the field of early years education, students will gain a detailed understanding of early childhood and the factors which impact upon, affect and influence it.

The course will help students to understand how children develop and learn, the theories that underpin practical work and develop skills to work with families. It also offers an insight into multi-agency work, developing key employability and transferable skills.

**Modules include:** Study Skills, Child Development, Play and the Early Years Curriculum, Observation and Assessment in Professional Practice, Communication in Early Years Settings, Inclusive Practice, The National Curriculum (Key Stage 1), Theoretical Perspectives in Early Years, Promotion of Child Health – Research in Action.

**Course type:** Full-time **Validated by:** Sheffield Hallam University

**Campus:** City

**UCAS code:** U3A4

Please refer to the website for full course details, entry requirements and the most up-to-date information [www.sheffcol.ac.uk/courses](http://www.sheffcol.ac.uk/courses)



Education

Level	Course	Career routes	Potential salary
5	- FdA Early Years Education	<ul style="list-style-type: none"> <li>- Early Years Teacher £30,000</li> <li>- English as a Foreign Language Teacher £35,000</li> <li>- Primary School Teacher £61,005</li> <li>- Secondary School Teacher £61,005</li> <li>- University Lecturer £55,000</li> </ul>	

# ENGINEERING

## → HNC in Engineering – Electrical and Electronic Engineering

Pearson Edexcel Higher Nationals are designed to provide a specialist vocational programme linked to professional body requirements and National Occupational Standards where appropriate.

The development of this two year course was informed by discussions/relevant publications from the Engineering Council UK (EC [UK]) and the Science, Engineering and Manufacturing Technologies Alliance (SEMTA). It offers a strong, sector-related emphasis on practical skills development alongside the development of requisite knowledge and understanding.

**Modules include:** Engineering Design, Engineering Maths, Engineering Science, Managing a Professional Engineering Project, Electrical and Electronic Principles, plus three optional units.

**Course type:** Part-time **Validated by:** Pearson  
**Campus:** Olive Grove

Please refer to the website for full course details, entry requirements, the most up-to-date information and to apply for part-time courses [www.sheffcol.ac.uk/courses](http://www.sheffcol.ac.uk/courses)

## → HNC in Engineering – Manufacturing Engineering

This two year, part-time course is aimed at students who have already gained a Level 3 qualification in Manufacturing Engineering, A Levels in Maths and Science, or the required experience in the manufacturing engineering field.

HNCs consist of mandatory core units and specialist units. The specialist units are designed to provide a specific focus to the qualification. These specialist, vocational qualifications teach students the key concepts and practical skills for direct progression to, or within, employment.

**Modules include:** Engineering Design, Engineering Maths, Engineering Science, Managing a Professional Engineering Project, Production Engineering for Manufacture, Quality and Process Improvement, plus two optional units.

**Course type:** Part-time **Validated by:** Pearson  
**Campus:** Olive Grove

Please refer to the website for full course details, entry requirements, the most up-to-date information and to apply for part-time courses [www.sheffcol.ac.uk/courses](http://www.sheffcol.ac.uk/courses)

Level	Course	Career routes	Potential salary
5	- HND in Engineering - Electrical and Electronic Engineering	- Electrical Engineer	£60,000
	- HND in Engineering - Manufacturing Engineering	- Renewable Energy Engineer	£80,000
		- Engineering Design and Development	£55,000
4	- HNC in Engineering - Electrical and Electronic Engineering	- Aerospace Engineer	£60,000
	- HNC in Engineering - Manufacturing Engineering	- CAD Technician	£35,000





Engineering



## → HND in Engineering – Electrical and Electronic Engineering

Pearson Edexcel Higher Nationals are designed to provide a specialist vocational programme linked to professional body requirements and National Occupational Standards where appropriate.

This HND is a one year course which students successfully completing the HNC Electrical and Electronic Engineering can top-up to. It aims to develop skills and techniques, personal qualities and attributes to equip individuals with the knowledge and understanding for successful employment in electrical and electronic engineering. Electrical and Electronic Principles is the core unit.

**Modules include:** Research Project, Professional Engineering Management, Further Mathematics, Industrial Power, Electronics and Storage, Industrial Systems, plus two optional.

**Course type:** Part-time **Validated by:** Pearson  
**Campus:** Olive Grove

## → HND in Engineering – Manufacturing Engineering

This part-time HND allows students who have already gained a HNC to top-up their qualification in just one year.

These specialist, vocational qualifications teach learners the key concepts and practical skills for direct progression to, or within, employment. The course is made up of core and specialist units which are designed to provide a specific focus to the qualification.

**Modules include:** Research Project, Professional Engineering Management, Manufacturing Systems Engineering, Lean Engineering, Advanced Manufacturing Technology, plus two optional.

Please note that some modules may be subject to change. Should this be necessary, information will be made available immediately.

**Course type:** Part-time **Validated by:** Pearson  
**Campus:** Olive Grove

Please refer to our website for full course details, entry requirements, the most up-to-date information and to apply for part-time courses  
[www.sheffcol.ac.uk/courses](http://www.sheffcol.ac.uk/courses)





# FLORISTRY

## → Higher Diploma in Floristry (ICSF)

This Level 4 Floristry Diploma is aimed at experienced florists who aspire to, or who are already working at, management level within the floristry industry.

The course combines creative floristry techniques with business concepts and processes. Students will work on and develop their creative processes throughout the qualification, culminating in a design portfolio of around 35 technical designs. In addition, students will have opportunities to compete in national competitions and visit large-scale floristry events.

This qualification is assessed over an 18 month period by an on-going portfolio of practical and theoretical assignments, culminating in both a theory and practical examination.

**Modules include:** Botanical Concepts and Practices for Floristry, Historical Studies for Floristry, Floral Event Practices, Business Practices for Floristry, Marketing and Promotional Practices for Floristry, Technical Floristry Skills [Tied Designs], Technical Floristry Skills [Wired & Glued Designs], Technical Floristry Skills [Designs in Mediums], Technical Floristry Skills [Design Trends] and Design Concepts in Floristry.

**Course type:** Part-time **Validated by:** City and Guilds

**Campus:** Hillsborough

Please refer to our website for full course details, entry requirements, the most up-to-date information and to apply for part-time courses

[www.sheffcol.ac.uk/courses](http://www.sheffcol.ac.uk/courses)

Level	Course	Career routes	Potential salary
4	- Higher Diploma in Floristry (ICSF)	- Florist	£20,000



# HEALTH AND SOCIAL CARE

## → FdSc Professional Practice in Health and Social Care

This course provides continuing personal and professional development in health and social care. Students must attain a work placement prior to enrolment on the course and 400 hours of work experience is a mandatory requirement.

Students must also be able to demonstrate the potential to be caring and compassionate, and have the ability to develop meaningful relationships with service users/carers.

**Modules include:** Work-based Learning (Academic and Practice), Reflective and Personal Development Skills, Essential Sciences for Person Centred Care; Holistic Assessment, Delivery and Implementation of Health and Social Care Interventions, Foundations for Effective Collaborative Practice; Promoting Health, Well-being and Independence; Using and Evaluating Evidence to Inform Practice, Leadership and Management.

**Course type:** Full-time **Validated by:** Sheffield Hallam University  
**Campus:** Hillsborough  
**UCAS code:** L5L5

Please refer to our website for full course details, entry requirements and the most up-to-date information [www.sheffcol.ac.uk/courses](http://www.sheffcol.ac.uk/courses)



Health and Social Care

Level	Course	Career routes	Potential salary
5	- FdSc Professional Practice in Health and Social Care	- Nurse - Midwife - Occupational Therapist - Sport Physiotherapist - Social Worker	£40,000 £45,000 £45,000 £45,000 £40,000



# MEDIA MAKE-UP

## → BA (Hons) Media Make-up and Hair Artistry

This highly creative course encourages students to enhance their creativity, whilst building on theory to inform technical and design skills.

The course's main focus is to develop a well-rounded graduate that can access a variety of roles within the media make-up and hair industry. Due to this, we encourage and work hard to find students work placements in theatre, TV & film. Industry guest speakers from fashion, theatre and television (Kryolan) will enhance the learning experience and expand knowledge of the industry.

Assessment is through a variety of methods including practical applications, formal presentations, group work and essay writing.

**Modules include:** Intro to Academic and Professional Development, Creative Make-up, Creative Hairstyling, Fashion, Haute Couture and Photographic Make-up, Period Make-up, Historical Hair Design, Freelance and Career Progression, Professional Practice, Media Make-up in Context, Specialist Skills in Hair and Make-up, Showcase Event, Critical and Contextual Studies, Minor and Major Projects.

**Course type:** Full-time **Validated by:** The Open University

**Campus:** Hillsborough

**UCAS code:** W4D6

Please refer to our website for full course details, entry requirements and the most up-to-date information [www.sheffcol.ac.uk/courses](http://www.sheffcol.ac.uk/courses)

Level	Course	Career routes	Potential salary
6	- BA (Hons) Media Make-up and Hair Artistry	<ul style="list-style-type: none"> <li>- Make-up Designer</li> <li>- Freelance Make-up Artist</li> <li>- Make-up Artist working on film, TV and theatre productions</li> </ul>	Variable*
		*Often dependent on hourly rates	



**“THE COURSES WERE DESIGNED AROUND BRIEFS MIMICKING REAL LIFE DESIGN PROJECTS WHICH HELPED ME DEVELOP MY CREATIVE AND MARKETING SKILLS.”**

**Joe Brown**, Artworker at TES Global and former Honours Degree in Graphic Design student

**“ALL OF MY TUTORS WERE HIGHLY KNOWLEDGEABLE IN THEIR SUBJECT AREAS AND ENSURED THAT I HAD A BROAD KNOWLEDGE OF THE UNITS OUTSIDE OF THE SPECIFIED COURSE CRITERIA, BETTER PREPARING ME FOR FURTHER STUDIES AND MY CAREER.”**

**Scarlett Smithies**, HND Animal Management student

# MEDIA, JOURNALISM AND PHOTOGRAPHY

## → FdA Media Production

This course has a strong practical emphasis exploring a wide variety of media production forms, responding to the ever-changing nature of the industry.

Students benefit from small groups, tutor access, state-of-the-art facilities and technical support to develop skills in an environment resourced to industry standards. The course works closely with employers to create a programme that addresses the real needs of the current market.

**Modules include:** Introduction to Media Production, Post Production, Practical Production Skills, Sound Production Skills, Contextual Studies, Motion Graphics, Advancing Edit Skills, Factual Project, Fiction Project, Progression and Critical Theory, Major Project, Work-based Learning.

**Course type:** Full-time **Validated by:** Sheffield Hallam University  
**Campus:** Hillsborough  
**UCAS code:** P310

Please refer to our website for full course details, entry requirements and the most up-to-date information [www.sheffcol.ac.uk/courses](http://www.sheffcol.ac.uk/courses)



## → FdA Photography

Offering skills relevant for a rapidly changing industry, students are encouraged to develop their own style using a wide variety of equipment.

The department has had a large investment in state-of-the-art digital photographic technologies, making it one of the best equipped courses in the country with strong industry contacts.

**Modules include:** Introduction to Photographic Practice, People, Lighting and Studio; Still Life and Advertising, Critical and Contextual Studies, Post-production Techniques, Work-based Learning (Applied Photographic Project), Self-promotion Through Publishing, Advanced Creative Photographic Practice, Advanced Digital Workflow in Photographic Practice, Exhibition and Presentation Skills, Specialist Professional Development, Professional Study and Progression.

**Course type:** Full-time **Validated by:** Sheffield Hallam University  
**Campus:** Hillsborough  
**UCAS code:** W640

Please refer to our website for full course details, entry requirements and the most up-to-date information [www.sheffcol.ac.uk/courses](http://www.sheffcol.ac.uk/courses)

Level	Course	Career routes	Potential salary
6	- BA (Hons) Creative Practice (Top-up) Media Production	- Broadcast Journalist	£80,000
		- Newspaper Journalist	£50,000
	- BA (Hons) Creative Practice (Top-up) Photography	- Video Editor	£45,000
		- Sound Technician (TV or film)	£35,000
5	- FdA Media Production	- Photographer	£50,000
	- FdA Photography		





## → BA (Hons) Creative Practice (Top-up) Media Production

This course is aimed at students who wish to top-up their Level 5 qualification to a full Bachelor's (Honours) Degree.

Students will have the opportunity to undertake a practical, industry-based creative project which may involve factual or fictional based productions, as well as writing research proposals for specialist projects you plan to undertake. Students will work towards the completion of a personal major practical project, and professionally present work at an end of year exhibition and screening to industry-invited guests.

**Modules include:** Critical Studies, Creative Practice, Professional Development, Planning for the Major Project, Major Project.

**Course type:** Full-time **Validated by:** Sheffield Hallam University  
**Campus:** Hillsborough  
**UCAS code:** P3A4

## → BA (Hons) Creative Practice (Top-up) Photography

This course is aimed at students who have studied photography at Foundation Degree (or equivalent) and wish to top-up to a full Bachelor's (Honours) Degree.

Throughout the course, students will be given the opportunity to refine personal style and develop professional skills. Students on the course will undertake a practical industry-based project which may involve work-based learning, exhibiting work, business start-ups, self-promotion or internships. Students will work towards the completion of a personal major practical project and professionally present work in an exhibition to industry-invited guests.

**Modules include:** Critical Studies, Creative Practice, Professional Development, Planning for the Major Project, Major Project.

**Course type:** Full-time **Validated by:** Sheffield Hallam University  
**Campus:** Hillsborough  
**UCAS code:** W6A5

Please refer to our website for full course details, entry requirements and the most up-to-date information [www.sheffcol.ac.uk/courses](http://www.sheffcol.ac.uk/courses)

# MUSIC AND PERFORMING ARTS

## → FD Music Performance and Production

This course focuses on the practical nature of music production and performance, contextualising it with industrial/professional and theoretical perspectives.

It offers a practical focus allowing students to develop specialist skills and to study chosen areas in-depth. Focusing on employability, the course involves work-related learning plus simulated and live briefs. Students work across a range of venues engaging in large scale projects involving project management.

**Modules include:** Practical Musicianship, Elements of Composition, Popular Music in Context, Composition in Context, Recording and Live Sound, Harmony and Composition, Advanced Practical Musicianship, Music Studio Production, Composition/Song-writing Portfolio, Session Styles and Improvisation, Music Process and Production.

**Course type:** Full-time **Validated by:** The Open University

**Campus:** Hillsborough

**UCAS code:** W3W3

Please refer to our website for full course details, entry requirements and the most up-to-date information [www.sheffcol.ac.uk/courses](http://www.sheffcol.ac.uk/courses)



## → FdA Performing Arts (Drama)

This vibrant and exciting course allows students to explore the different elements of performing arts with a focus on acting.

Students will create performances for a variety of audiences and forge links with local professionals. The course will provide students with broad-based study and help to extend knowledge, expand abilities and experiences as an actor.

**Modules include:** Professional Roles and Practice, Performing Arts in Context, Practitioner Skills, Skills for the Workplace, Performing Arts in Practice, Research and Analysis in the Performing Arts, Advanced Practitioner Skills, Managing a Performance, Performance Project, Advanced Performance.

**Course type:** Full-time **Validated by:** Sheffield Hallam University

**Campus:** Hillsborough

**UCAS code:** W400

Please refer to our website for full course details, entry requirements and the most up-to-date information [www.sheffcol.ac.uk/courses](http://www.sheffcol.ac.uk/courses)

Level	Course	Career routes	Potential salary
6	- BA (Hons) (Top-up) Music Performance and Production	- Classical Musician	£40,000
	- BA (Hons) (Top-up) Performing Arts (Drama)	- Music Therapist	£43,772
	- BA (Hons) (Top-up) Performing Arts (Musical Theatre)	- Live/Studio Sound Engineer	£40,000
5	- FD Music Performance and Production	- Actor/Actress	Variable*
	- FdA Performing Arts (Drama)	- Dance Teacher	£50,000
	- FdA Performing Arts (Musical Theatre)	- Playwright	Variable*
		*Often dependent on hourly rates	

## → FdA Performing Arts (Musical Theatre)

The course aims to provide students with a broad-based area of study in the field of performing arts and helps students extend their knowledge, abilities and experiences.

The course will provide a foundation for a range of careers in performing arts and within community arts organisations.

**Modules include:** Professional Roles and Practice, Performing Arts in Context, Practitioner Skills, Skills for the Workplace, Performing Arts in Practice, Research and Analysis in the Performing Arts, Advanced Practitioner Skills, Managing a Performance, Performance Project, Advanced Performance.

**Course type:** Full-time **Validated by:** Sheffield Hallam University  
**Campus:** Hillsborough  
**UCAS code:** 7B8V

## → BA (Hons) (Top-up) Music Performance and Production

This exciting course aims to provide students with a broad ranging study of the field of music, and the opportunity to develop detailed specialist knowledge in music performance and production.

Taught by experienced staff (all practising musicians with business expertise), this course offers extensive concentration on practical skills of musicianship, composition, recording and live sound in industry standard facilities, including a recording studio networked to fully kitted practice rooms and computer rooms with logic industry software. Strong employer links in the creative industries offer opportunities for extensive experience of performance.

**Modules include:** Major Project, Minor Project, Professional Practice.

**Course type:** Full-time **Validated by:** The Open University  
**Campus:** Hillsborough  
**UCAS code:** W3W4

Please refer to our website for full course details, entry requirements and the most up-to-date information [www.sheffcol.ac.uk/courses](http://www.sheffcol.ac.uk/courses)







## → BA (Hons) (Top-up) Performing Arts (Drama)

Providing students with a broad-based area of study, this course develops specialist knowledge and skills.

With strong employer links in the creative industries and opportunities for extensive experience of performance, students will benefit from study alongside students on Music Performance and Production, and Musical Theatre courses. Offering specialist study but also allowing a broader context ensures students are able to cope with an era of convergence in media, music and performing arts in general. The course includes workshops and discussions with organisations such as Sheffield Theatres and current practitioners working in the industry.

**Modules include:** Major Performance, Minor Project, Planning a Performance, Professional Practice.

**Course type:** Full-time **Validated by:** The Open University

**Campus:** Hillsborough

**UCAS code:** W4W4

Please refer to our website for full course details, entry requirements and the most up-to-date information [www.sheffield.ac.uk/courses](http://www.sheffield.ac.uk/courses)

## → BA (Hons) (Top-up) Performing Arts (Musical Theatre)

This course aims to provide students with a broad-based area of study with a focus on musical theatre. It will help students to extend their knowledge, and expand their abilities and experiences.

Students will be given the opportunity to create performances for a variety of audiences and to forge links with local professionals in the arts community.

**Modules include:** Professional Practice, Planning a Performance, Minor Project, Major Performance, Developmental and Reflective Portfolio.

**Course type:** Full-time **Validated by:** The Open University

**Campus:** Hillsborough

**UCAS code:** 7B9V

Please refer to our website for full course details, entry requirements and the most up-to-date information [www.sheffield.ac.uk/courses](http://www.sheffield.ac.uk/courses)

# SPORT

## → FdSc Sport and Exercise Coaching

Interested in pursuing a career in the sport and exercise industry? This course aims to develop an understanding of academic theory in alignment with significant practical experience and coaching opportunities.

The course also helps to develop study skills, knowledge, professional practice and industry-specific skills gained through work-based learning and voluntary opportunities to improve employability and awareness of the industry.

**Modules include:** Personal and Academic Development, Work-based Learning, Sport and Exercise in the UK, Leadership and Innovation in Sport and Exercise, Applied Coaching, The Science of Sport, Sport and Exercise, Coaching Enterprise, Research Project, Application of Science, Coaching Process.

**Course type:** Full-time **Validated by:** Sheffield Hallam University  
**Campus:** Hillsborough  
**UCAS code:** CX61

Please refer to our website for full course details, entry requirements and the most up-to-date information [www.sheffcol.ac.uk/courses](http://www.sheffcol.ac.uk/courses)



## → FdSc Physical Education and School Sport

This Foundation Degree aims to develop subject knowledge and understanding of the concepts, processes and content of the National Curriculum for Physical Education (PE) in primary, secondary and further education.

You will gain a thorough understanding of Physical Education (PE) in schools and wider communities, enabling you to play a pivotal role in improving young people’s physical, social and emotional development. You will also develop your personal and interpersonal qualities that prepare you to be a skilful practitioner in educational settings.

You will also explore contemporary issues that influence the wider context of PE and school sport, putting you in the privileged position of being able to transform the lives of young people.

**Modules include:** Developing Professional Practice, Games - Practical Activities, Introduction to Thinking Sociologically and Philosophically, Sport Science, Research in Physical Education, Applied Sport, Exercise and Health Science, Socio-Cultural Impacts on PE and School Sport.

**Course type:** Full-time **Validated by:** Sheffield Hallam University  
**Campus:** Hillsborough  
**UCAS code:** SP11

Please refer to our website for full course details, entry requirements and the most up-to-date information [www.sheffcol.ac.uk/courses](http://www.sheffcol.ac.uk/courses)

Level	Course	Career routes	Potential salary
5	- FdSc Sport and Exercise Coaching	- Sports Development Officer	£50,000
	- FdSc Physical Education and School Sport	- Sports Coach	£35,000
		- Sport and Exercise Psychologist	£48,000
		- PE Teacher	£61,005
		- Sports Scientist	£60,000
		- Sports Physiotherapist	£45,000







# UNIFORMED PUBLIC SERVICES

## → FD Public Services: Policing Studies

This exciting course integrates work-related experience with the underpinning academic knowledge needed to achieve employability in the areas of policing and justice.

Students are encouraged to establish links with the police, voluntary organisations or within the criminal justice system to complete work-based learning/industrial placement modules. The course aims to support the acquisition of knowledge and skills in criminology and criminal justice, with a particular focus on policing.

**Modules include:** Police Procedure and Professional Ethics, Introducing Criminology, Criminal Justice System, Psychology and Crime, Policing and Criminal Justice, Organisational Context, Contemporary Police and Policing, Criminological Theory, Policy and Legal Frameworks, Work-based Learning, High Risk and Serious Offenders, Research Project in Criminology.

**Course type:** Full-time **Validated by:** Sheffield Hallam University

**Campus:** Hillsborough

**UCAS code:** L490

Please refer to our website for full course details, entry requirements and the most up-to-date information [www.sheffcol.ac.uk/courses](http://www.sheffcol.ac.uk/courses)



Uniformed Public Services

Level	Course	Career routes	Potential salary
5	- FD Public Services: Policing Studies	- Police Officer - Security Manager - Prison Officer	£60,000 £38,000 £38,000





# HIGHER AND DEGREE APPRENTICESHIPS

If you are progressing from an Advanced Apprenticeship or a Level 3 study programme, you may wish to continue your study with an employer on a Higher or Degree Apprenticeship. Higher and Degree Apprenticeships work in the same way as other Apprenticeships, with most of your time spent training in your job role with your employer.

Upon completion of a Higher Apprenticeship, you will gain a Level 4 or 5 qualification and be able to progress on to a Degree Apprenticeship where you will gain the equivalent to a full Bachelor's (Honours) Degree.

Alternatively, if you are already employed, meet the Apprenticeship entry requirements and your employer would like you to do an Apprenticeship, we can speak to your employer about the prospects of setting it all up for you.

Email [admissions@sheffcol.ac.uk](mailto:admissions@sheffcol.ac.uk) for more information.

All Apprenticeships are dependent on employment circumstances.

Level	Degree Apprenticeships
6	- Chartered Legal Executive
Higher Apprenticeships	
5	- Management - Healthcare Assistant Practitioner - Care Leadership and Management (Adult Social Care) - HR Consultant/Partner - Operations/Departmental Manager
4	- Business and Professional Administrator - Construction Management - Engineering Manufacturing - Electrical Engineering - Software Developer - Network Engineer - Cyber Security - Healthcare Science Associate

For more information about Higher or Degree Apprenticeships, contact [jobconnect@sheffcol.ac.uk](mailto:jobconnect@sheffcol.ac.uk) or ring 0114 260 2600.

# PROFESSIONAL COURSES

At The Sheffield College we offer a wide range of qualifications that aim to boost your CV and give you the theoretical knowledge you need to progress in the workplace.

If you are looking to take your career to the next level by improving your qualifications, or if you are wanting to retrain all together, these are the courses for you.

The tuition fees for these courses may be covered by 19+ Advanced Learner Loans. Please visit [www.sheffcol.ac.uk/student-support/19-advanced-loans](http://www.sheffcol.ac.uk/student-support/19-advanced-loans) for more details about financing your course.

Qualification	Level
AAT Accounting – Advanced Diploma	3
AAT Accounting – Professional Diploma	4
OCR – Business Administration NVQ Diploma	3
OCR – Business Administration NVQ Diploma	4
CILEX – Certificate in Law and Practice	3
CILEX – Professional Diploma in Law and Practice	3
CILEX – Graduate FastTrack Diploma	6
CILEX – Professional Higher Diploma in Law and Practice	6
CIPD Foundation Certificate in Human Resource Practice	3
CIPD Foundation Diploma in Human Resource Practice	3
CIPD Intermediate Certificate in Human Resource Management	5
ILM Online – Leadership and Management (Award/Certificate/Diploma)	3
ILM Online – Leadership and Management (Award/Certificate/Diploma)	4
ILM Online – Leadership and Management (Award/Certificate/Diploma)	5
ILM – Management NVQ Diploma	3
ILM – Management NVQ Diploma	4
ILM – Management and Leadership NVQ Diploma	5
ILM – Strategic Leadership and Management NVQ Diploma	7
Internal Quality Assurance – SEEYAC	4
Certificate in Personal Training	3
Teaching English to Speakers of Other Languages	3
Team Leader/Supervisor (Apprenticeship)	3



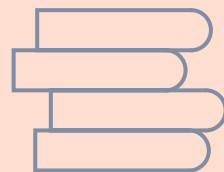
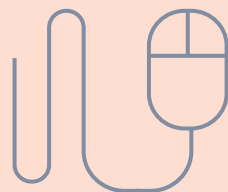
# HOW TO APPLY

Ready to apply? If you are applying for a full-time HNC, HND, Foundation Degree, Bachelor's Degree or Top-up Degree, and are a new student to the college, please follow the below process. Remember, filling in your application accurately will save you time as we won't have to clarify information with you.

Already studying with us? Speak to your Tutorial Mentor about how to apply.

## 1 Register with UCAS

If you've not applied to university before, you'll need to register for an account with UCAS ([www.ucas.com](http://www.ucas.com)). Fill in your personal details and give yourself a username, password and set some security questions (in case you forget your login details).



## 2

### Log in and complete your personal details

Add to the above personal details by stating your funding options, whether you have any special needs or disabilities, or any criminal convictions. At this stage you'll verify your email address and have the option to add a parent, guardian or adviser who can speak to UCAS on your behalf.

## 3

### Fill in additional information

UCAS will ask you to fill out things like your ethnicity, what jobs your parents do and if you've attended any summer schools. This information is just for UCAS statistics.

## 4

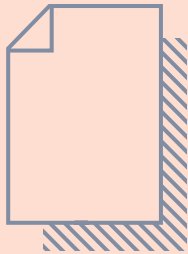
### Student Finance

If you've indicated you'll need help funding your course, you can fill out this page which gives UCAS permission to share details with Student Finance England, making the whole process a lot smoother and faster.

5

**Enter your course choices**

Apply for up to 5 courses with The Sheffield College. You'll find our courses and their codes on our website, and in this guide.



6

**Complete your education history**

Make sure you input all your qualifications: GCSEs, Functional Skills, A Levels, BTECs etc. If you're awaiting your results, make sure you input that qualification as result 'pending'.

7

**Employment history**

At The Sheffield College we value your personal development. In this section you get to list any full-time or part-time jobs you've had, including descriptions of those jobs. Don't worry about voluntary or unpaid work yet, save that for your personal statement!

8

**Write your personal statement**

Your chance to sell yourself and show off your skills. Tell us why you're applying to The Sheffield College, your ambitions and what interests you about the subject. It's worth telling us what makes you suitable – any relevant skills, experience and achievements gained from education, work or other activities (including hobbies). Remember though, you have a 4,000 character and 47 line limit. Keep an eye on your word count and make it concise!

9

**Check it through**

Give your application a once over. Make sure you've completed and saved every section, and are happy with your personal statement. When everything is marked as complete, read and agree to the declaration which will allow you to move to the final sections.

10

**Get a reference, pay and send off**

This can be from a former teacher, tutor, adviser or professional. Anyone who knows you academically.

Applications cost £18 (single course) or £24 (multiple courses). Once you've paid, send it off to UCAS and keep an eye on the Track Portal which will keep you updated with the progress of your application.

You will receive alerts when:

- you're invited for an interview (course dependent)
- you receive an offer from us for your course

11

**Part-time, professional and Apprenticeship applications**

If you are wishing to study part-time with us you'll need to apply through the application form on our website, or email [info@sheffcol.ac.uk](mailto:info@sheffcol.ac.uk) for a copy. Fill it in and send it back to us: **The Sheffield College HE Team, Hillsborough Campus, Livesey Street, Sheffield, S6 2ET.**

Professional courses, Higher and Degree Apprenticeships can be applied for via our website.

We look forward to hearing from you.

## Summary of Main Contractual Terms and Conditions

When you accept a place at The Sheffield College you agree to be bound by the Terms and Conditions of the contract. This is a summary of the main clauses. The full text is available at [www.sheffcol.ac.uk/about-us/terms-and-conditions](http://www.sheffcol.ac.uk/about-us/terms-and-conditions)

### 1. Pre-enrolment contract

This is formed when you accept the offer of a place and it secures that place for you, provided you meet any conditions stated in your offer letter. You have the right to cancel this contract within 14 days of accepting the offer.

### 2. The enrolment contract

- a. *The enrolment contract is formed at enrolment. From this time you become liable for the following financial arrangements:*
- Payment of tuition fees - your tuition fees will not change during the course
  - If you withdraw from the course before the end of Semester 1 you will be liable for payment of 50% of the annual fee
  - If you withdraw after the end of Semester 1 you will be liable for payment of the whole of the annual fee
  - Student Finance England will not pay your fees following withdrawal from the course

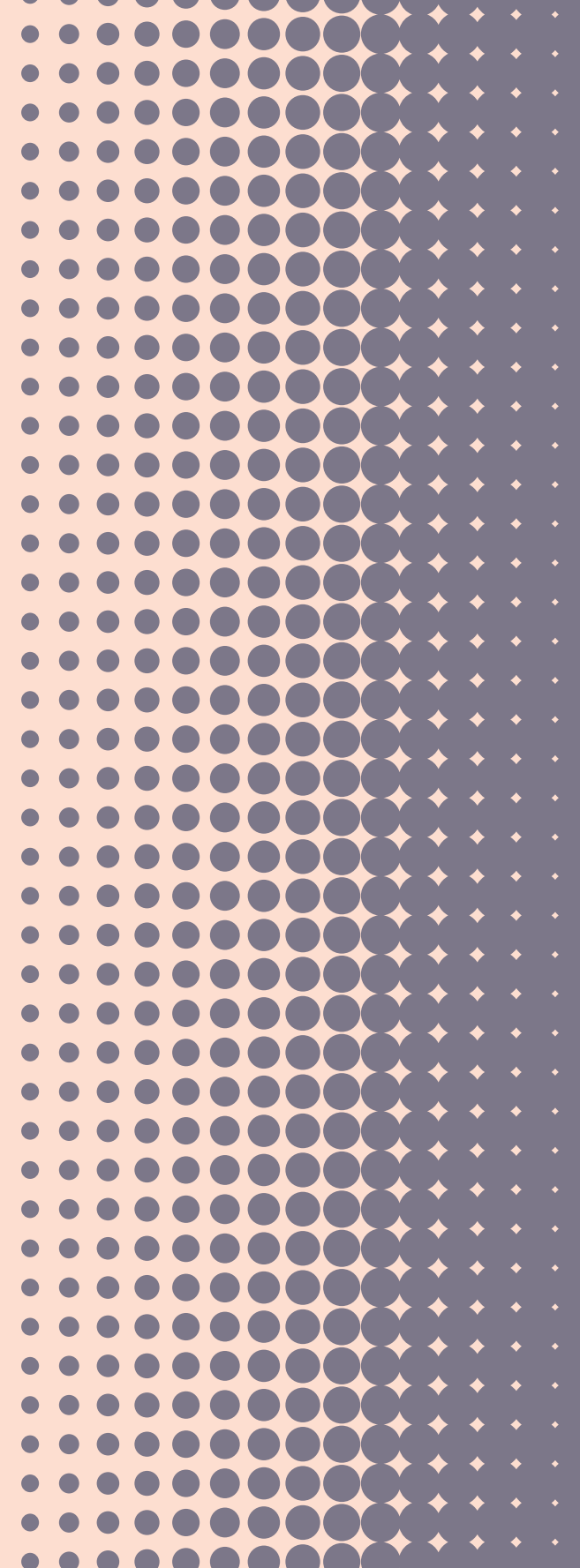
- b. *Changes to your course*  
The college will make every effort to provide the course as described on the website information. If, due to circumstances outside our control, changes have to be made to the course you will be informed in writing as soon as practicable.
- c. *Course closure*  
In rare circumstances, the college may decide to close a course up to 28 days before it is due to start. This may happen, for example, if there are insufficient applicants to provide you with a quality learning experience. In such circumstances the college will offer you an alternative place if appropriate or inform you of other institutions that may be able to meet your needs.
- d. *Compliance with the regulations*  
On enrolment you become subject to the regulations. These include:
- Academic and assessment
  - Conduct, fitness to practice
  - Expulsion and discipline
  - Fees and financial
  - Information technology
  - Intellectual property
  - Complaints and appeals





**“THE LAST  
THREE YEARS  
HAVE BEEN  
AMAZING.  
THE TUTORS  
WERE ALL GREAT,  
ALWAYS THERE  
TO HELP”**

Former student, The Sheffield College



# The Sheffield College

0114 260 2600

[info@sheffcol.ac.uk](mailto:info@sheffcol.ac.uk)

[www.sheffcol.ac.uk](http://www.sheffcol.ac.uk)

All information is correct at time of print. Data and statistics taken from EMSI software and the National Careers Service. If you need this guide in any other format, please get in touch.